

## Wonderware Helps Deliver Clean Water to Pinellas County

*"The Platform helps us build templates for our objects - pumps, pump stations. We can deploy a template out to many types of pump stations. There may be two or three hundred of those at one time - and make one template & disperse those out & we can build a pump station with a screen in a matter of minutes, compared to maybe one or two hours before."*

**Ken Osborne, SCADA Systems Coordinator  
Pinellas County**

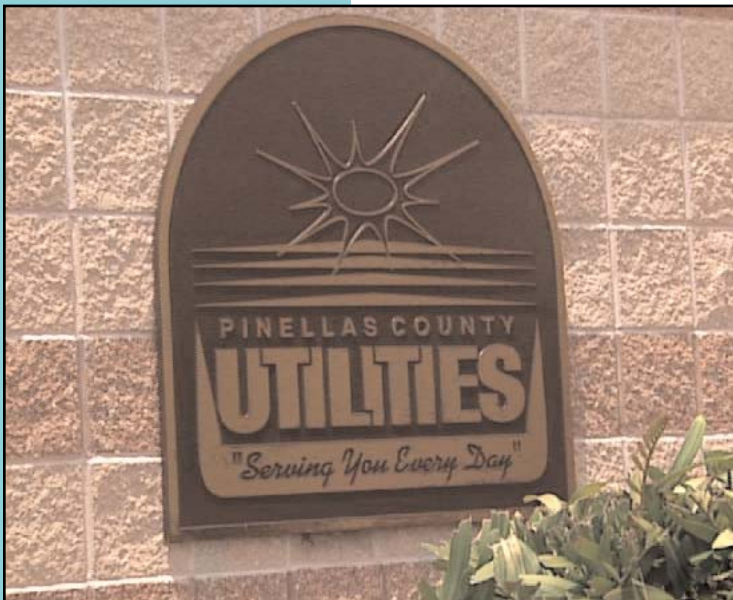
**Pinellas, Florida** — Pinellas County has a rich history dating back to the Spanish conquistadors who discovered this Florida peninsula in the early 16th century in their search for gold and silver. Though the early explorers were unsuccessful in their hunt for riches, today's tourists treasure visits to numerous attractions, historical sites and the region's miles of pristine, white sand beaches. Pinellas County's local population of nearly 1 million is dwarfed by the estimated 4.2 million tourists who visit each year. Among the many basic services managed by Pinellas County, supplying ample fresh water and wastewater treatment remain top priorities for this community, which is bounded by the Gulf of Mexico on the west and Tampa Bay on the east. With the help of Wonderware industrial application software, Pinellas County Utilities (PCU) continues to consistently meet or surpass federal and state drinking water-quality regulations and continues to manage an efficient wastewater operation.

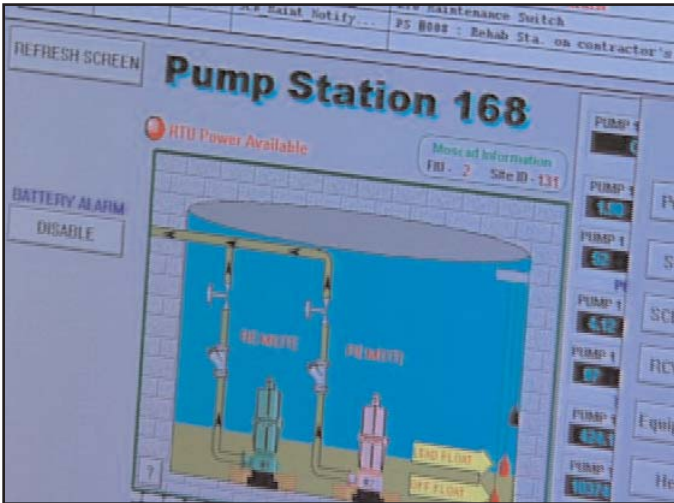
PCU provides safe, high-quality and cost-effective water and wastewater services to consumer and business accounts. PCU supplies an average of 66 million gallons of drinking water and treats 30 million gallons of wastewater at its facilities every day.

Three hundred miles of reclaimed lines provide retail service throughout the county for irrigation and other non-potable uses.

In the late 1990s an outdated SCADA system at PCU was evaluated for its effectiveness. It was found not to be Y2K compliant, excessive labor was required to monitor the process and the system needed constant maintenance and adjustments. Also, PCU lacked efficient process and production reporting and analysis for its management, which could only review critical data at specific stations at the plant. PCU began its search for a solution that was scalable and more efficient, and would help support the utility's operational goals. PCU turned to a software solution from Wonderware with the help of InSource Solutions, a member the Wonderware distributor channel.

Wonderware software leverages the power of Microsoft's .NET technology for optimal application integration. PCU is currently using the Wonderware Application Server that provides a unified environment for visualization, plant history, device communications and automation application integration; InTouch human-machine interface (HMI); Wonderware Historian, a high-performance real-time and historical database; and ActiveFactory, a data trending, analysis and reporting tool for accessing information stored in Wonderware Historian.





**Wonderware's software solution platform makes it easy for Pinellas to build templates of their pump stations and duplicate them to other stations in a matter of minutes instead of hours.**

The reclaimed water operations at PCU utilize a four-step treatment and disinfection process. The first step eliminates large solid material. Next, microorganisms break down smaller solids. This is followed by removing fine suspended particles and the final step adds chlorine to eliminate disease-causing organisms. Wastewater takes 10-12 days to be treated and, on average, four houses of wastewater are needed to supply one house with reclaimed water. Wonderware's software solution has successfully supported PCU's operations during every step of this process.

"Wonderware InTouch HMI software for visualization and industrial process control was installed to allow workers at PCU to quickly create and deploy customized applications that connect and deliver real-time information," said Ken Osborne, SCADA systems coordinator at Pinellas County.

In addition, workers can access data from any location 24/7 via handheld and portable devices, enabling management to view vital plant and business information, such as downtime and statistical process control analysis. By streamlining data collection and providing process monitoring, reporting and analysis tools, Wonderware software has enabled PCU to meet its Y2K compliance, reduce its labor, maintenance and engineering costs, and provide access to important plant and business information. As a result, the public utility has been able to successfully maintain its bottom line and reports that it has already achieved its return on the new technology investment.

"Pinellas County also implemented the Wonderware Application Server, which has probably saved us 30 to 40 percent in time for editing and changing our screens," Osborne said. "With Wonderware software, Pinellas

County has boosted its engineering productivity and also streamlined engineering time. Wonderware ActiveFactory software provides the water utility with data trend analysis, sophisticated numerical data analysis and comprehensive data reporting. The combination of these tools enables PCU to publish valuable real-time and historical plant information to the Web or company intranet, permitting authorized management to review plant operations.

Published reports and trends can be modified ad hoc by plant knowledge workers and managers to quickly troubleshoot problems, study potential process inefficiencies and eliminate the time-consuming process of locating data. Web access to historical and real-time information at PCU facilities is simplified by the Wonderware Information Server production and performance management portal.

"We use ActiveFactory for a lot of our trending and ad hoc trending to look for problems and processes," Osborne said. "A lot of our reporting is custom built in-house by our SCADA department using Visual Basic and XL. The Wonderware Historian, from day one, has been easy to use and Wonderware improvements to this application over the years have made it even simpler, yet very robust."

PCU programs have won numerous regional and national awards for innovation and effectiveness, and with the implementation of Wonderware innovative software solutions, the organization continues to strive for excellence. Florida has undergone significant changes since the arrival of its first visitors more than 500 years ago, and Pinellas County is dedicated to preserving its "treasures" of picturesque beaches and clean water for the tourists of today.



**Workers can now access data from any location 24/7 via hand-held and portable devices. Management can view vital plant and business information, such as downtime and statistical process control analysis, and can make critical decisions.**



[www.wonderware.fi](http://www.wonderware.fi)

**Helsinki**  
tel. +358 9 540 4940  
[automation@klinkmann.fi](mailto:automation@klinkmann.fi)

**St. Petersburg**  
tel. +7 812 327 3752  
[info@wonderware.ru](mailto:info@wonderware.ru)

**Moscow**  
tel. +7 495 641 1616  
[info@wonderware.ru](mailto:info@wonderware.ru)

WW\_sstory\_PinellasCounty\_en\_1210

**Yekaterinburg**  
tel. +7 343 376 5393  
[info@wonderware.ru](mailto:info@wonderware.ru)

**Samara**  
tel. +7 846 273 95 85  
[info@wonderware.ru](mailto:info@wonderware.ru)

**Kiev**  
tel. +38 044 495 33 40  
[info@wonderware.com.ua](mailto:info@wonderware.com.ua)

**Riga**  
tel. +371 6738 1617  
[info@wonderware.lv](mailto:info@wonderware.lv)

**Vilnius**  
tel. +370 5 215 1646  
[info@wonderware.lt](mailto:info@wonderware.lt)

**Tallinn**  
tel. +372 668 4500  
[info@wonderware.ee](mailto:info@wonderware.ee)

**Minsk**  
tel. +375 17 200 0876  
[info@wonderware.by](mailto:info@wonderware.by)