



Summary

Wonderware data analysis and reporting clients put actionable information into the hands of the people most responsible for plant performance: operators, engineers and operations managers.

Business Value

Wonderware data analysis and reporting clients deliver information from the primary information flows found in any manufacturing or industrial operations environment:

- Production Management** information from your business systems to the plant floor
- Performance Management** information from your assets and activities to your business systems.



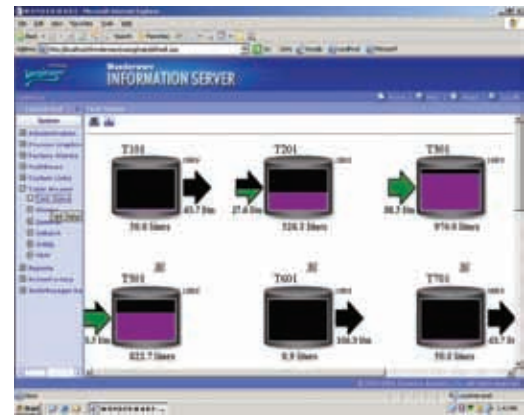
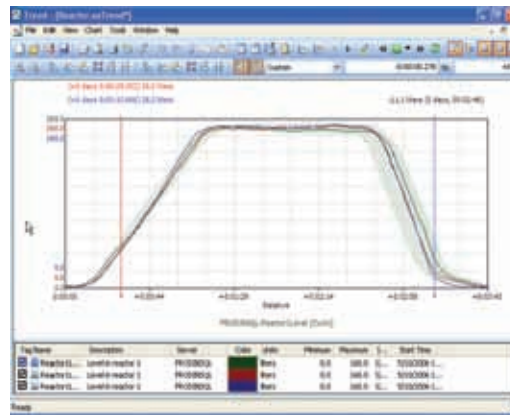
Wonderware Historian Client 10.0

MAKE INTELLIGENT PLANT DECISIONS IN REAL TIME WITH WONDERWARE HISTORIAN CLIENT

Wonderware® Historian Client delivers production and performance information quickly and easily in visually informative formats enabling operations, engineering, quality, and management to make critical real time decisions improving productivity, rapidly adapting to change, and optimizing production and performance of the operation.

A VERSATILE CLIENT ARCHITECTURE

Wonderware Historian Client 10.0 is versatile and open so data can be viewed, analyzed, consumed, and reported in various industry standard software such as desktop applications, web browsers and external applications, such as Microsoft Office, Wonderware's InTouch® HMI or even custom clients.



DATA ANALYSIS AND REPORTING

The rich, desktop-based analysis and reporting experience gives engineers ad hoc query capabilities and preconfigured trending tools needed to drill down into data details and evaluate trends, find problem root causes, and determine the best solutions.

Wonderware Historian Client includes multiple applications designed to maximize the value of data stored in Wonderware Historian. These applications give you access to plant and process data through easy to use interfaces. Using information from these powerful tools, plant workers can quickly troubleshoot problems, study potential operational inefficiencies and eliminate the time-consuming process of locating data.

Trend Client

The Wonderware Historian Trend client is a powerful desktop data graphing tool. Providing a range of charting and formatting capabilities, it is designed to allow users to create highly informative data analysis charts for real-time and historical data trend analysis, faster troubleshooting and process improvement.

Multiple types of analysis displays and reports are available as standard, including:

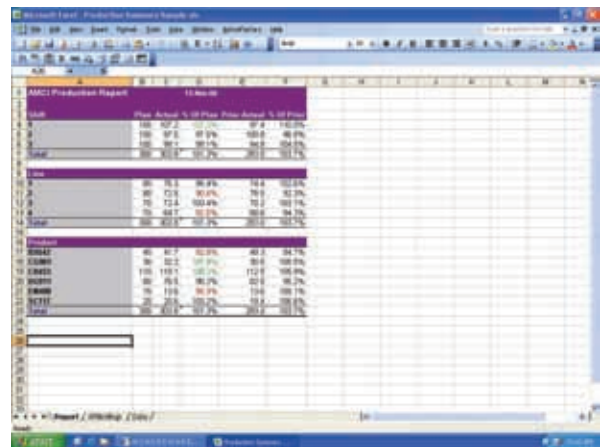
- Trend charts
- X-Y Scatter plots
- Batch trend charts, including 'Golden Batch' comparison

Report Client

This add-on for Microsoft Word® enables users to create custom production reports using Wonderware Historian data and save/publish in standard document formats. The Report client can use the Wonderware Historian Query client to allow the creation of highly focused reports tailored to specific user requirements.

Workbook Client

This Microsoft Excel add-on is designed to simplify the creation of process-data reports using Wonderware Historian data. Wonderware Historian Workbook reports can be published to the Wonderware Information Server portal for broad distribution across the plant, intranet or Internet.



Query Client

This easy-to-use desktop tool for creating database queries removes the need for SQL expertise. Query can be used in tandem with the Wonderware Historian Trend, Workbook or Report clients. It can also be used as a standalone querying tool for the Wonderware Historian or any SQL-compliant database.

Web Reporting

Wonderware Historian Trends, Reports and Workbooks can be published via a simple menu selection to the Wonderware Information Server. Using Wonderware Information Server aggregates plant and business data into a powerful Web-based production and performance management solution.

EXTENSIBILITY

To enable seamless integration within your enterprise applications, the Wonderware Historian Clients also have componentized objects which enable you to integrate the powerful analytical and visual capabilities of the suite within your own applications.

Wonderware Historian Client is built on ArcestrA® technology, which allows unprecedented scalability and functional richness in industrial applications. Using ArcestrA technology, manufacturers can build complete production and performance management solutions using the single, integrated development platform that ArcestrA delivers — saving time and development resources. Applications can start small and grow into a complete plant-wide or enterprise solution as requirements dictate or evolve.

Client Control Objects

Invensys provides a powerful library of component-based .NET and ActiveX control versions of the Wonderware Historian Client, enabling extensibility options for customers wanting to build custom industrial applications. These client components also are able to be used with Wonderware's flagship HMI, InTouch, and third-party container applications, such as Microsoft's Internet Explorer and the Visual Studio development system.

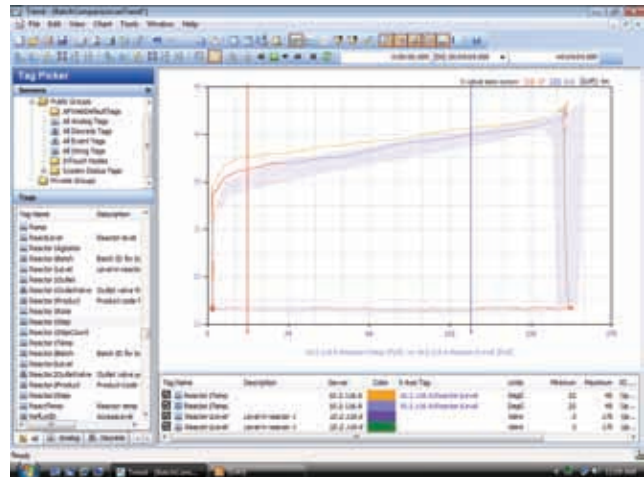
Toolkits

Wonderware Historian Client control objects are developed using .NET and C# software technology, enabling them to be seamlessly integrated into today's .NET-based custom industrial applications. Should you further wish to integrate elements within custom applications, a range of toolkit options are available to save you significant development time.

POWERFUL ANALYSIS

Easily access summary information about all displayed tags, including minimum and maximum values, the times associated with those values, average values, ranges, etc. Summary statistics can be calculated for the entire trend interval or for only the period between time cursors. Summary statistics data can be saved or printed.

In addition, valuable process and operations data can be used to annotate your process data. This contextual information is invaluable for understanding process performance and becomes part of your plant's data record — making future optimization and troubleshooting activities more efficient and effective. Annotation automatically captures the user name and the time and date of the entry.

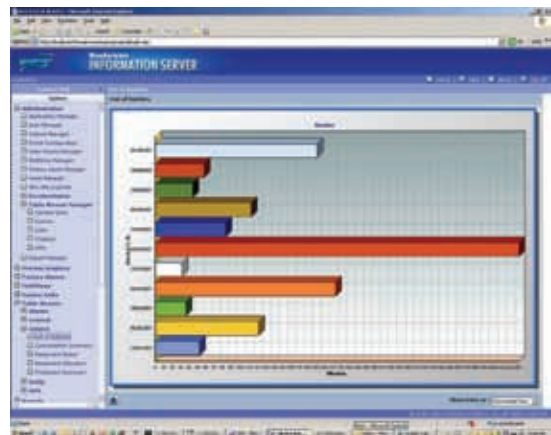


POWERFUL DATA RETRIEVAL MODES

Plant IT personnel tasked with creating and maintaining production reports and regulatory reports can streamline data queries needed to pull important information out of the huge volume of plant process data stored in Wonderware Historian. Users can add new content to existing production reports or create new production reports that were difficult or impossible to create in the past.

EASY REAL-TIME DATA MINING

Using the Query client enables you to easily and rapidly mine data stored in Historian and other SQL data sources. No prior knowledge of SQL is required since a simple tag browser is used to find and select individual tags or entire public or private tag groups. Query provides a wide range of standard query types and also allows users to save favorite queries.





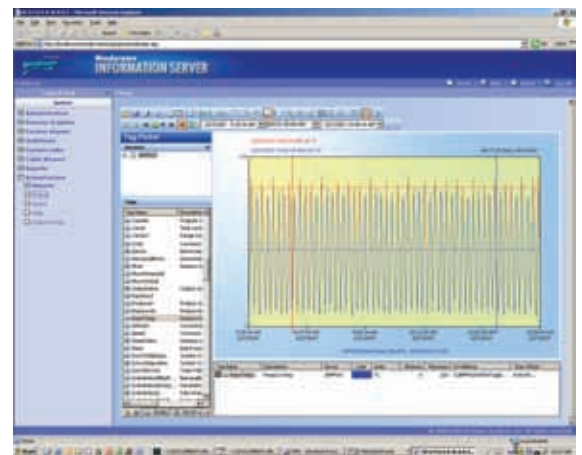
WONDERWARE INFORMATION SERVER

Reports from other Wonderware software solutions can be integrated with those created by Historian Client and made available over the Web using Wonderware Information Server.

This ensures the proper information formatted appropriately can be made available to the right individuals wherever they are located. Using client components within Wonderware's Information Server delivers a rich and flexible portal experience.

Sample reporting solutions include:

- **Table Weaver** - dynamic, drill-through reports and data displays
- **Wonderware Performance** - OEE and equipment downtime reports and KPI dashboards
- **Wonderware Operations** – multiple reporting options including:
 - Production events and formula reporting (usage & set-points)
 - Material consumption including comparisons of "plan vs. actual"
 - Consumption and genealogy of materials, equipment, personnel and production events related to a lot, batch or serial number
 - Complete traceability and genealogy reporting to help you comply with government regulations



CUSTOMER SUPPORT AND SERVICES

The Invensys Customer First Services Program makes it easy to receive up-to-date Wonderware software and associated applications. To learn more about this valuable program, which maintains and often increases the value of your industrial software applications, please contact your local Invensys sales representative.

WW_datasheet_HistorianClient_en_1210



www.wonderware.fi

Helsinki
tel. +358 9 540 4940
automation@klinkmann.fi

St. Petersburg
tel. +7 812 327 3752
info@wonderware.ru

Moscow
tel. +7 495 641 1616
info@wonderware.ru

Yekaterinburg
tel. +7 343 376 5393
info@wonderware.ru

Samara
tel. +7 846 273 95 85
info@wonderware.ru

Kiev
tel. +38 044 495 33 40
info@wonderware.com.ua

Riga
tel. +371 6738 1617
info@wonderware.lv

Vilnius
tel. +370 5 215 1646
info@wonderware.lt

Tallinn
tel. +372 668 4500
info@wonderware.ee

Minsk
tel. +375 17 200 0876
info@wonderware.by